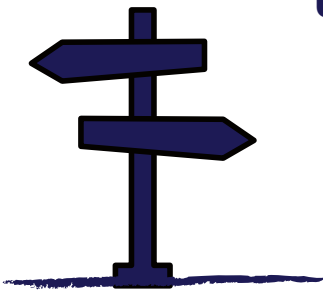




Uncomfortable Oxford Scavenger Hunt



Osney



Starting place: Frideswide Square, OX1 1HU

Trail Duration: approx. 1h

Accessibility : if isolating or at home, we suggest using [Google Street View!](#)

Click on the question marks once you find the locations!

LOCATION 1



A square named after a patron saint, is where our trail commences,
Walk west, past the roundabout, and then under a pair of bridges.

And on Botley Road, you'll come across a bridge with coats of arms,
Spot the stairs that'll take you down, to enjoy the Thames' charms.

Follow the stream, and soon you'll see a blend of old and new,
Scan the code, to learn about where an abbey once stood too.

Keep roaming and navigate these compass named streets:
East, South, and then West, till Bridge Street your feet meets.

There take two lefts, and so you'll land back on Botley Road
Where another dedication lies, to the patroness of Oxford.

Peek at its "Alice Door" and circle the church clockwise,
For somewhere in this green grass, a stone to locals lies.

LOCATION 2



LOCATION 3



Now retrace your steps back to where one hovers over water,
Once it's crossed, on your left, look for two black bollards.

Behind you'll find a path that leads north beside the river,
Stick to it, until you hit a bridge with the roundest figure.

As it dips, head right and under the bridge with a train track,
Then left, then right, to find intact an historical railway flashback.